



Engineering Company, Inc.

30 Progress Avenue (203) 888-9900

Seymour, CT 06483 (203) 888-1145



Software Release/Installation Notes

Date: 11/15/2008

Version Camera Video Engine Installation

Machine / Platform:DRS25

Compatibility

Can be applied to any version that is 8.00.032 or higher.

Installation Requirements

Must have an existing and operational installation before attempting this installation.

Application Folder(s)

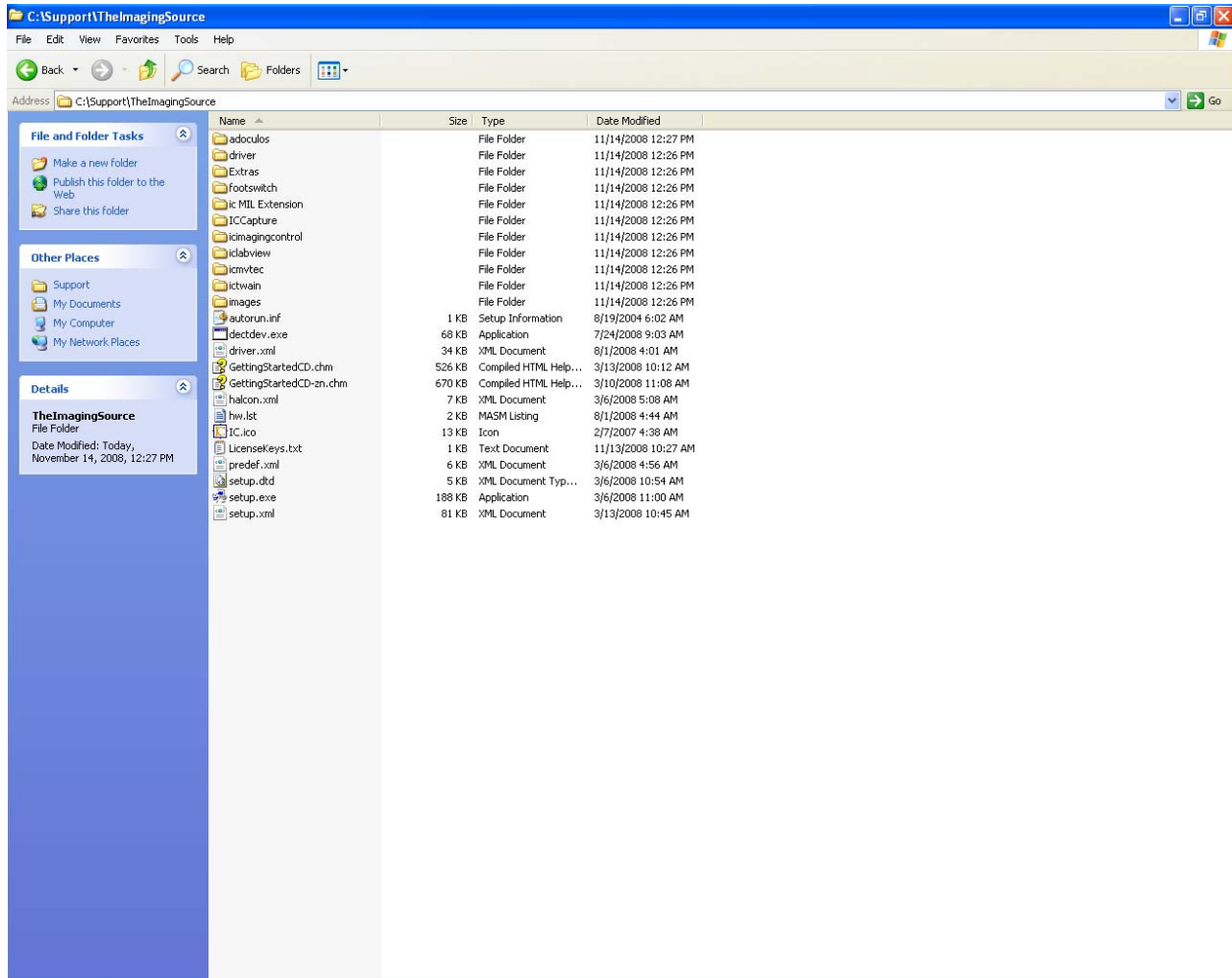
C:\Support\TheImagingSource

Installation Procedure

Overview

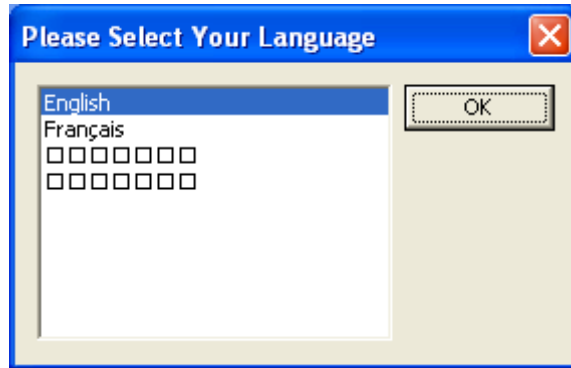
The folder containing the default vendor support software is located in the following location:

C:\Support\TheImagingSource



Click on the **Setup.exe** application to begin the installation process

Step 1: Select the English option.

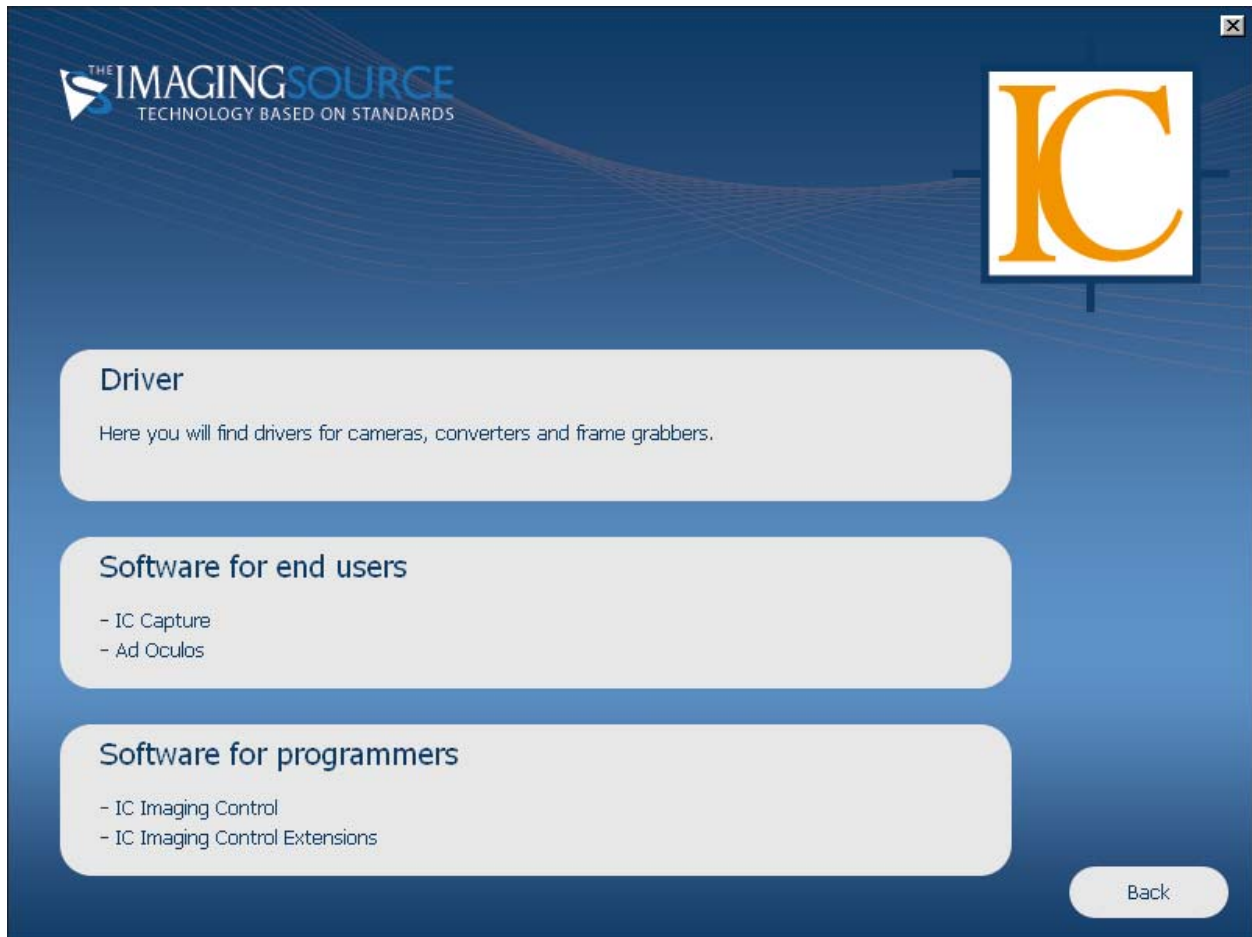


A brief loading message may be displayed...

Step 2: Click on the **Software installation** option.



Step 3: Click on the **Driver** option.



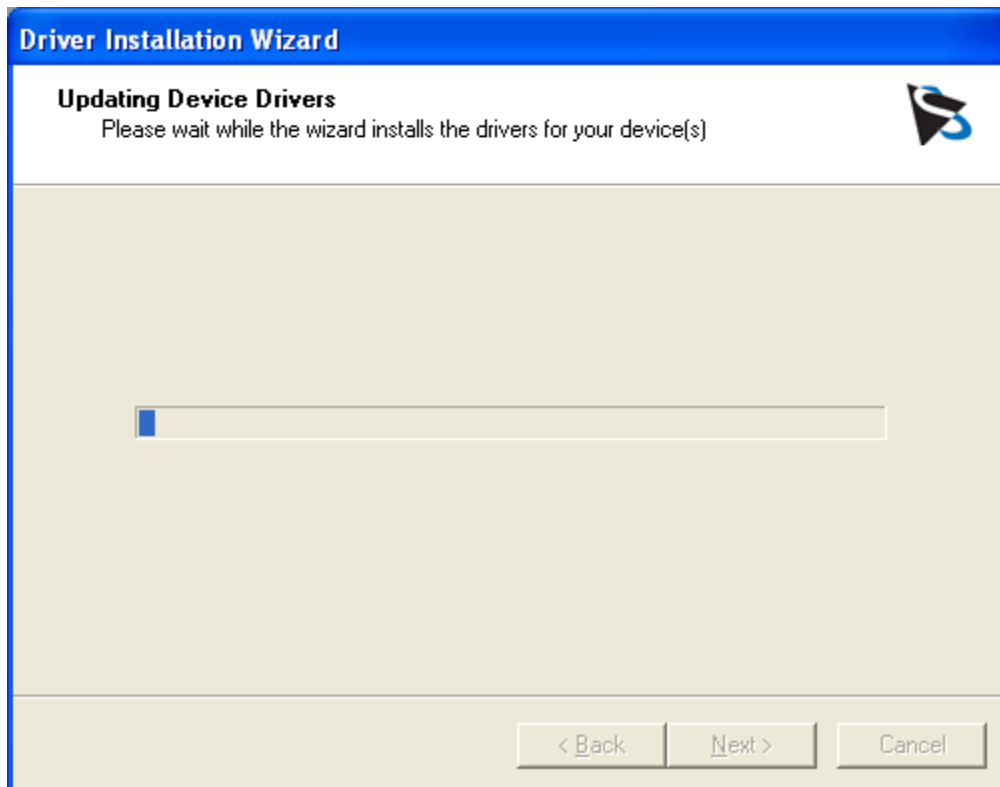
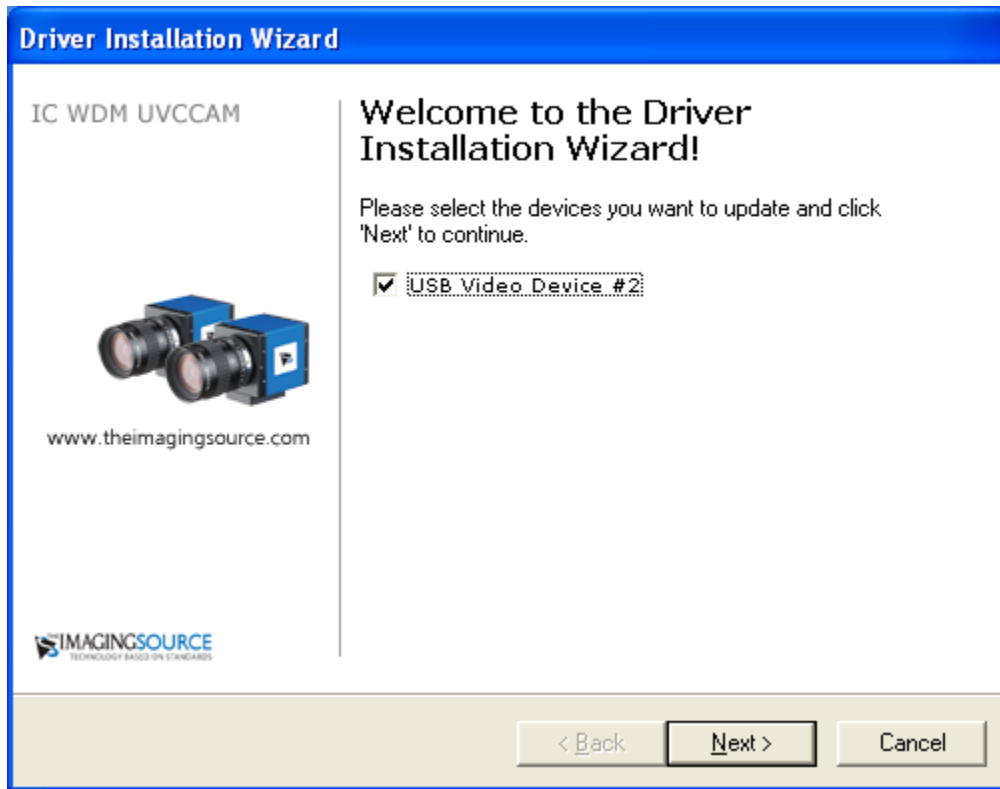
Step 4: Click on the **USB Cameras** option.

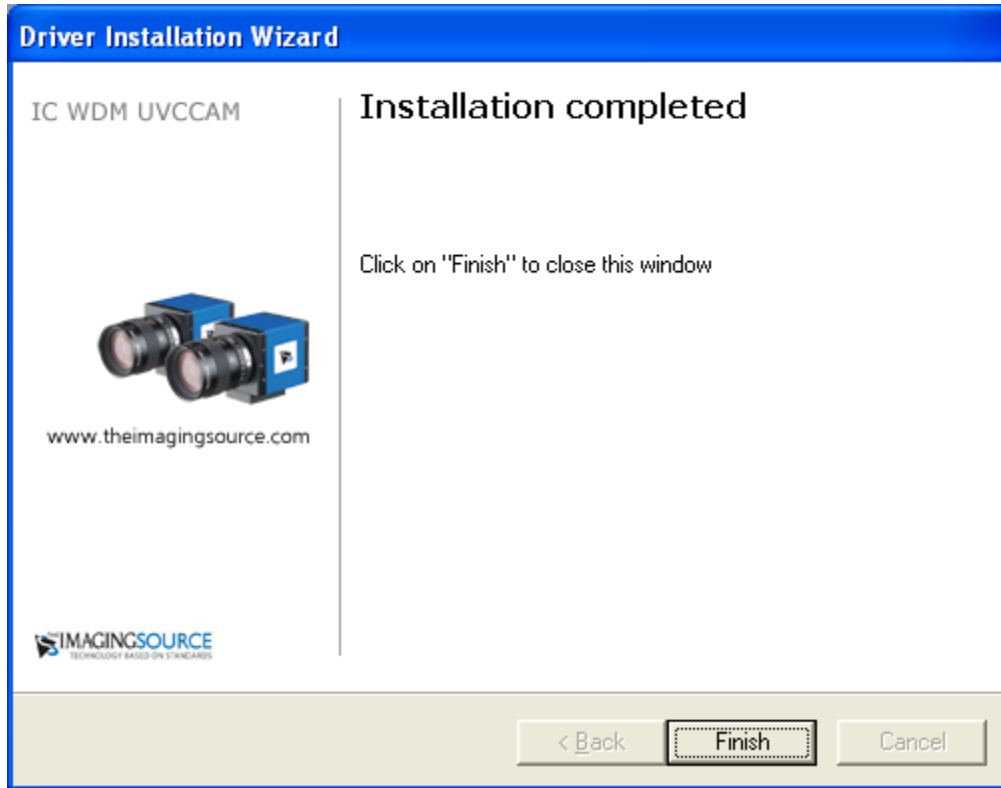


Step 5: Click on the **Imaging Source USB CCD** option.



Step 6: Accept on all **Default** options during the installation procedure.





Step 7: Click on the **Back** button to return to the main menu.

Step 8: Click on the **Software for end users** options.



Step 9: Click on the **IC Caption** option.



Step 10: Click on the **IC Capture Professional** option.

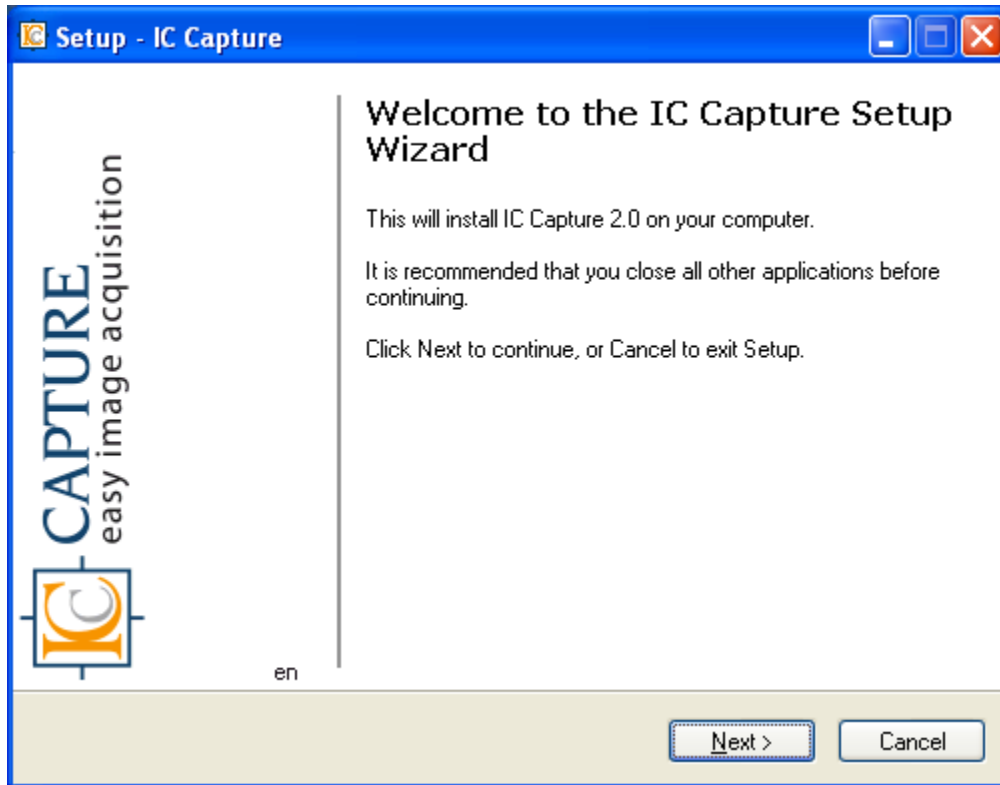


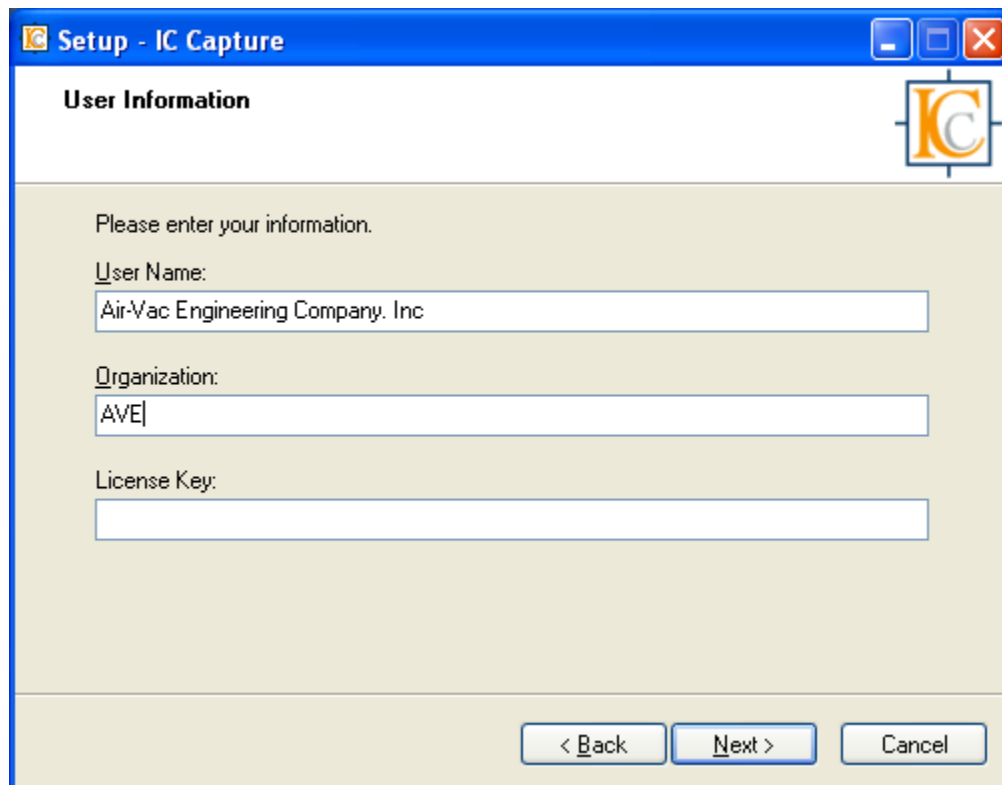
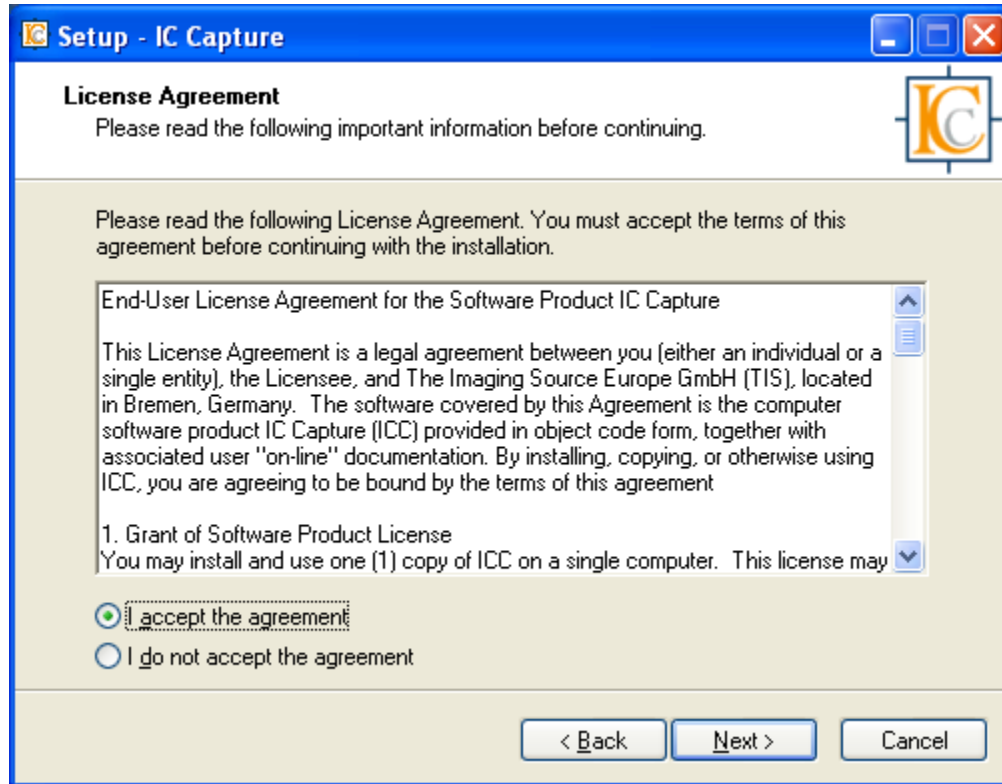
The screenshot shows a software selection window for 'THE IMAGING SOURCE' with the tagline 'TECHNOLOGY BASED ON STANDARDS'. In the top right corner, there is a large orange 'IC' logo. Below the logo, the text reads 'Software for end users: IC Capture'. There are three main selection options, each in a light grey rounded rectangle:

- IC Capture Trial**: Works with any device which is equipped with a WDM Stream Class driver. - 30 day trial period
- IC Capture Professional**: Works with any device which is equipped with a WDM Stream Class driver. A license key is required.
- IC Capture**: Works with the devices that were purchased at The Imaging Source. A license key is required. It is labeled on the CD ROM's cover.

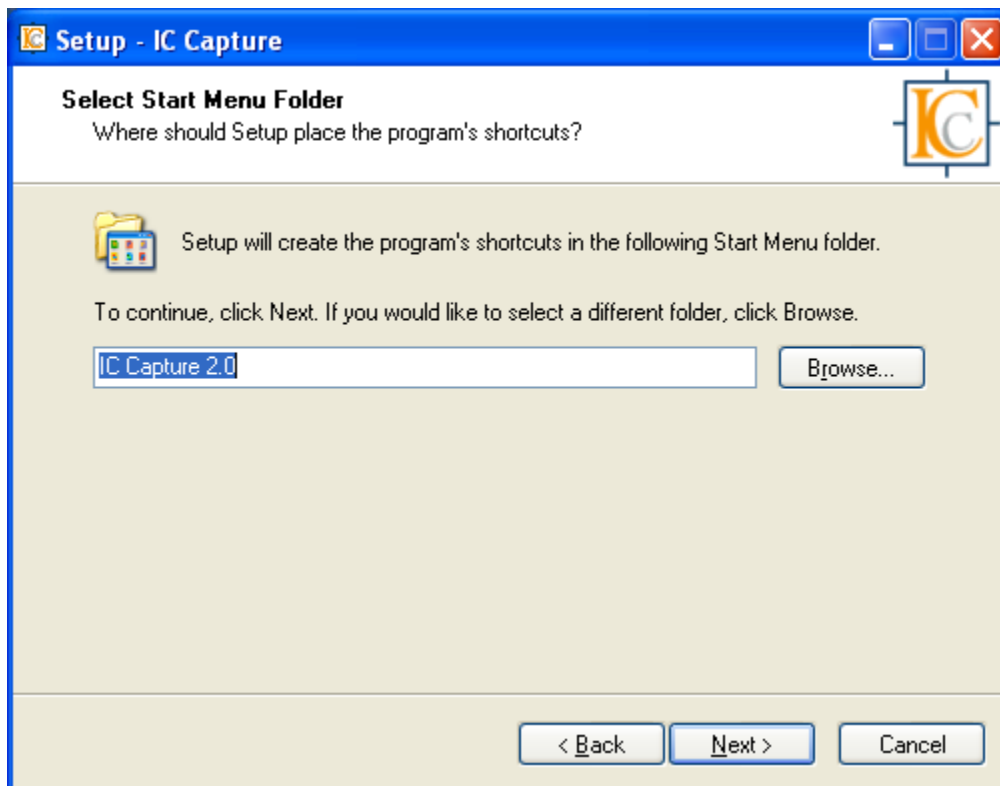
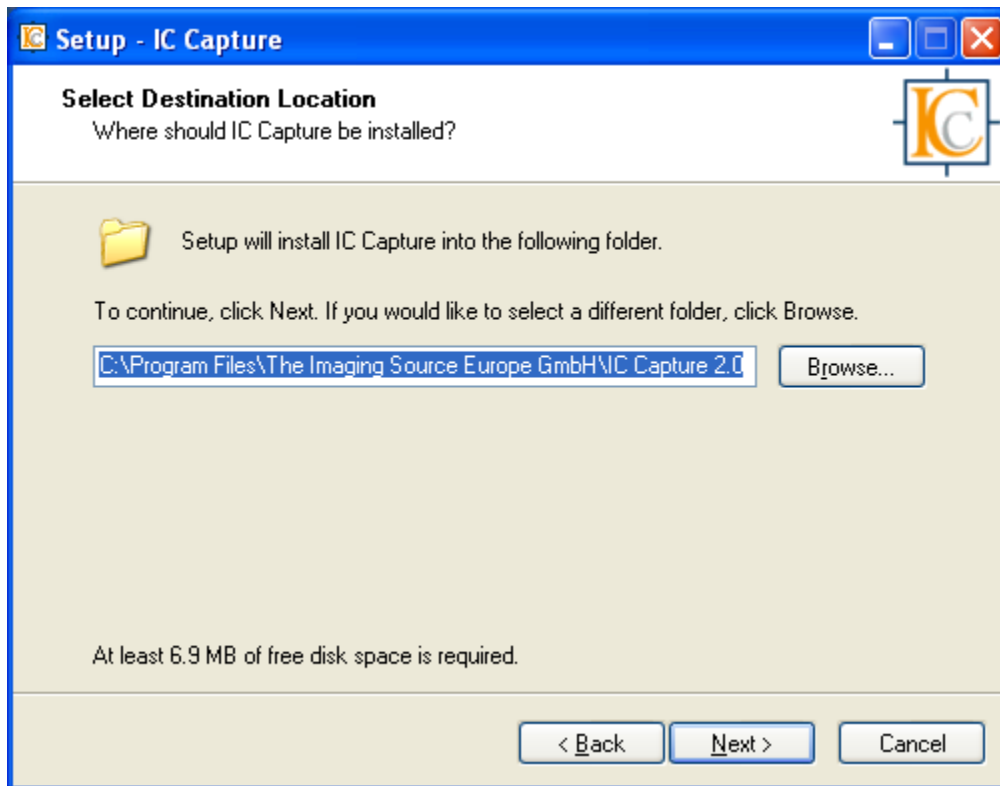
To the right of the 'IC Capture' option is an image of a blue CD-ROM case and a camera. A 'Back' button is located in the bottom right corner of the window.

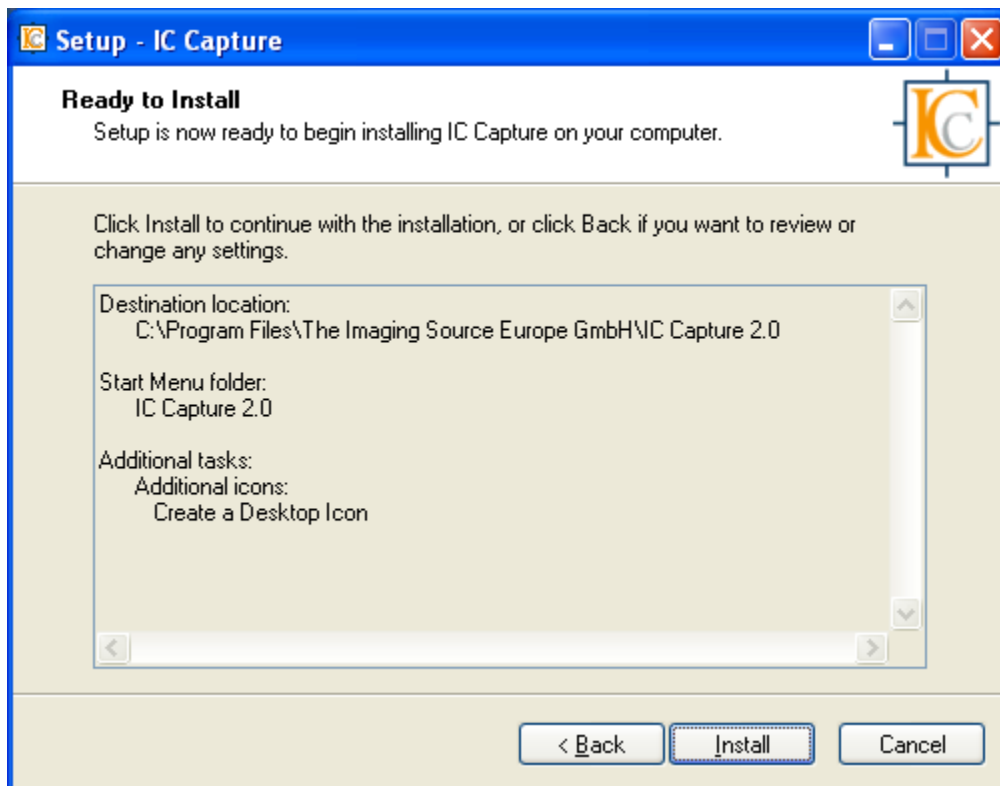
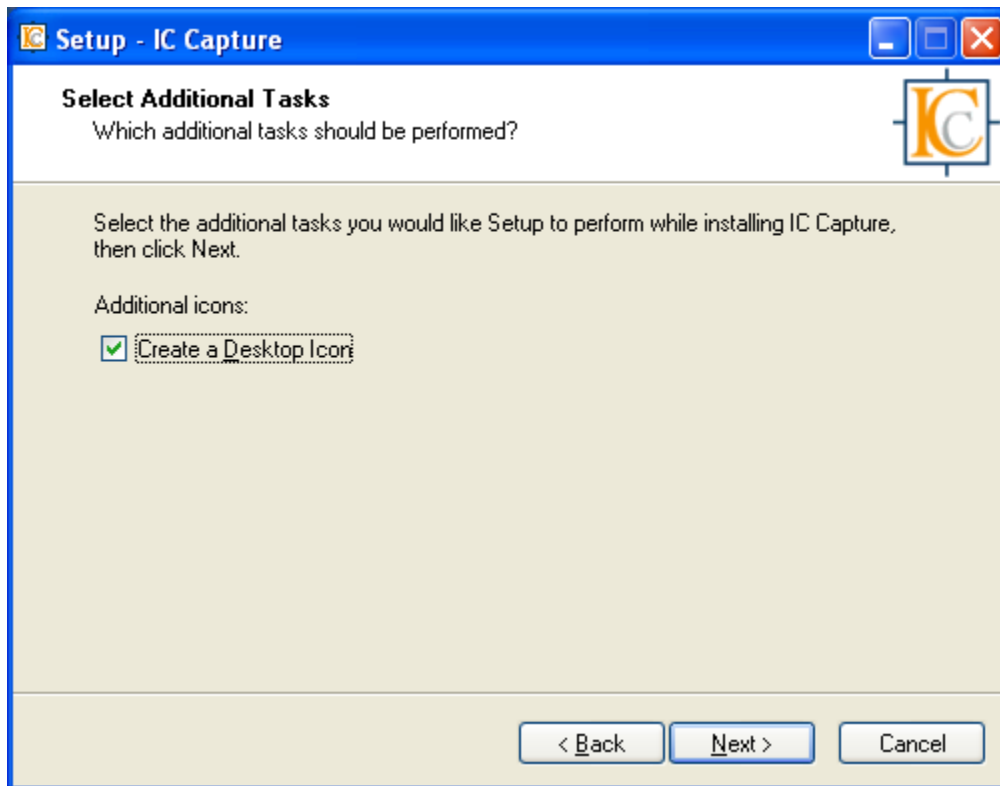
Step 11: Accept the **License Agreement** and click on all **Default** options during the installation procedure.

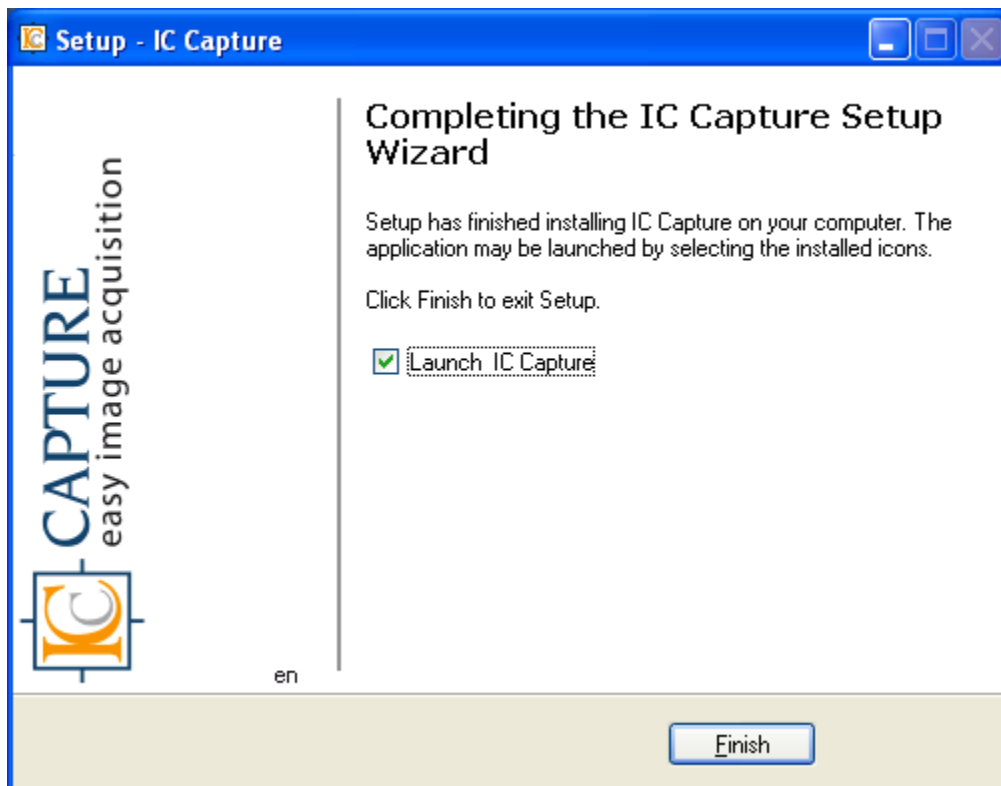
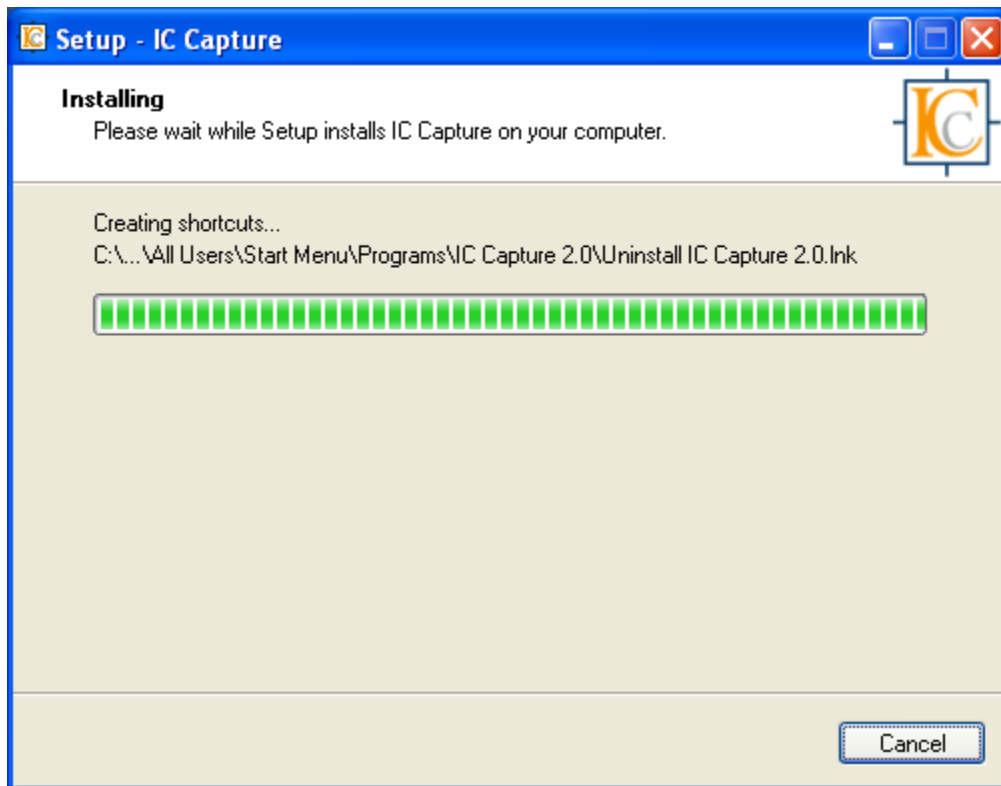




Enter the appropriate **License Key** from the **LicenseKeys.txt** file located in the support folder defined at the beginning of this document.







This completes the installation procedure.