



**Engineering Company, Inc.**

30 Progress Avenue (203) 888-9900

Seymour, CT 06483 (203) 888-1145



---

## *Software Release/Installation Notes*

---

**Date:** 4/10/2008

**Version** Speech Engine Installation

**Machine / Platform:**DRS25

### **Compatibility**

Can be applied to any version that is 8.00.027-003 or higher.

### **Installation Requirements**

Must have an existing and operational installation before attempting this upgrade.

Important: **Versions above 8.00.027-001 implement an optional text-to-speech engine for speaking profile process messages. An additional setup program will be automatically started at the end of the normal installation process.**

### **Application Folder(s)**

C:\Program Files\Air-Vac-Engineering\DRS25

C:\Program Files\Air-Vac-Engineering\DRS25\data

## Installation Procedure

### Overview

The database must be updated before the application program can be started.

### Step 1:

Locate and double-click on v8.0.00.025.exe file to automatically extract/copy the files to the correct target folder location. Files will be copied to the C:\Program Files\Air-Vac-Engineering\DRS25\data folder.

### Step 2:

Locate and access the following folder: C:\Program Files\Air-Vac-Engineering\DRS25\data

Double-click on the database\_update\_tool.exe. This program will generate the necessary batch file used to update the drs25 database. The generated name of the batch file is based on the currently installed DRS25 software version. For example, if the current software version is 8.00.017, then the batch file name will be 8.00.017-UpdateDB.bat. Only 1 batch file should be available per software installation/upgrade.

### Step 3:

Verify that the #.##.###-UpdateDB.bat file was created in the C:\Program Files\Air-Vac-Engineering\DRS25\data folder.

### Step 4:

Double-click on the #.##.###-UpdateDB.bat file. This program will update the database to match the new application program.

### Step 5:

This software version offers an option to speak (text-to-speech synthesis) process and control messages at the end of each process event, therefore, an additional setup program will automatically be activated allowing 2 additional voice selections to be available (Microsoft Mike / Microsoft Mary). Please follow the detailed instructions below.

### Step 6:

Start the DRS25 software and login. Click on the Options / About menu item and verify the software version.

This completes the installation procedure for this release.

## **Release Notes - Overview**

### **Installation Instructions for DRS25 Speech Processing**

---

#### ***Description***

The following information explains the installation procedure for setting up default Microsoft Voice Templates (Merge Modules).

Completing this installation will offer all (3) voice selections offered by Microsoft

Microsoft Sam (default)

Microsoft Mary

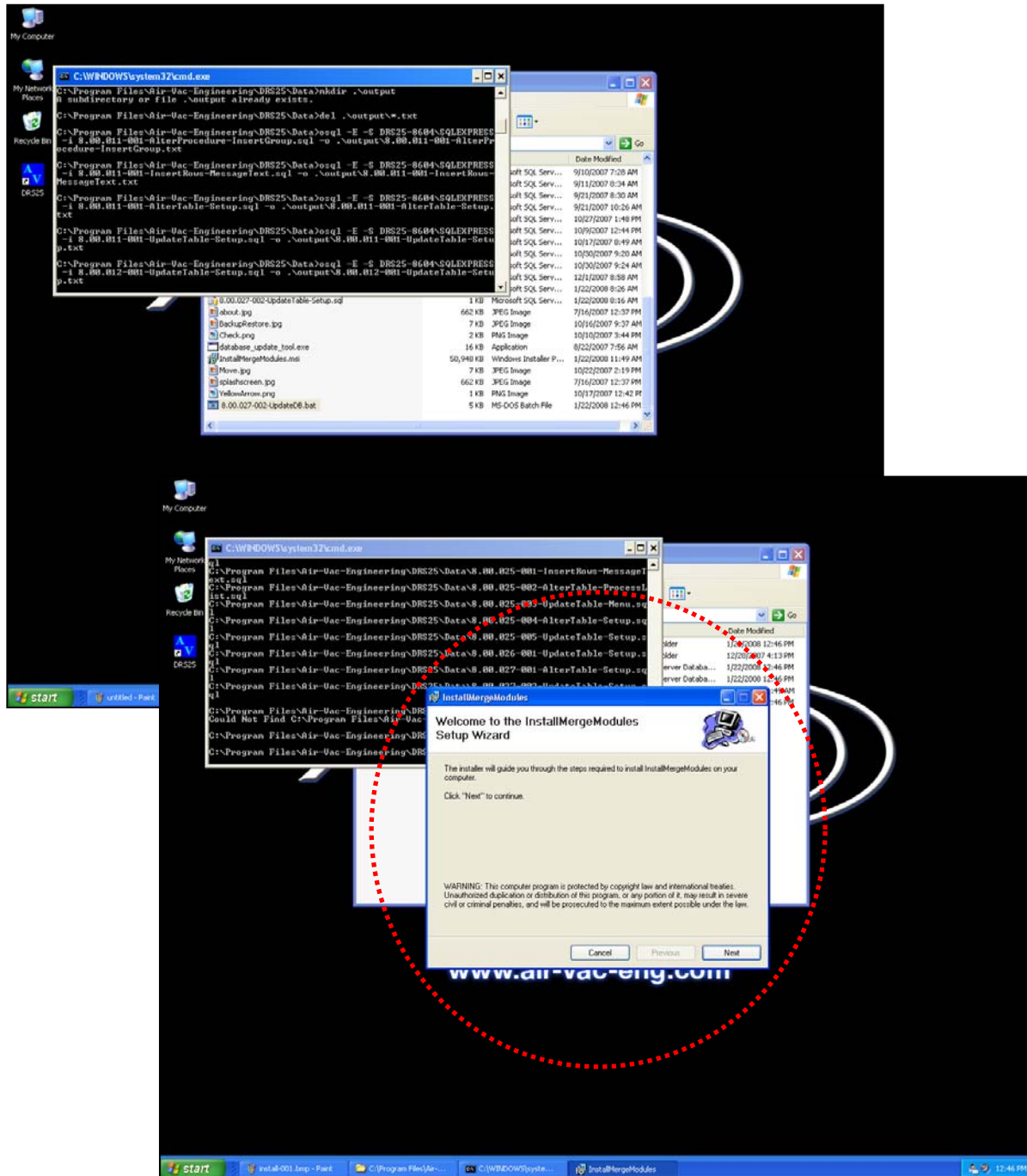
Microsoft Mike

After the normal installation procedure the following program will be automatically activated:

InstallMergeModules.msi

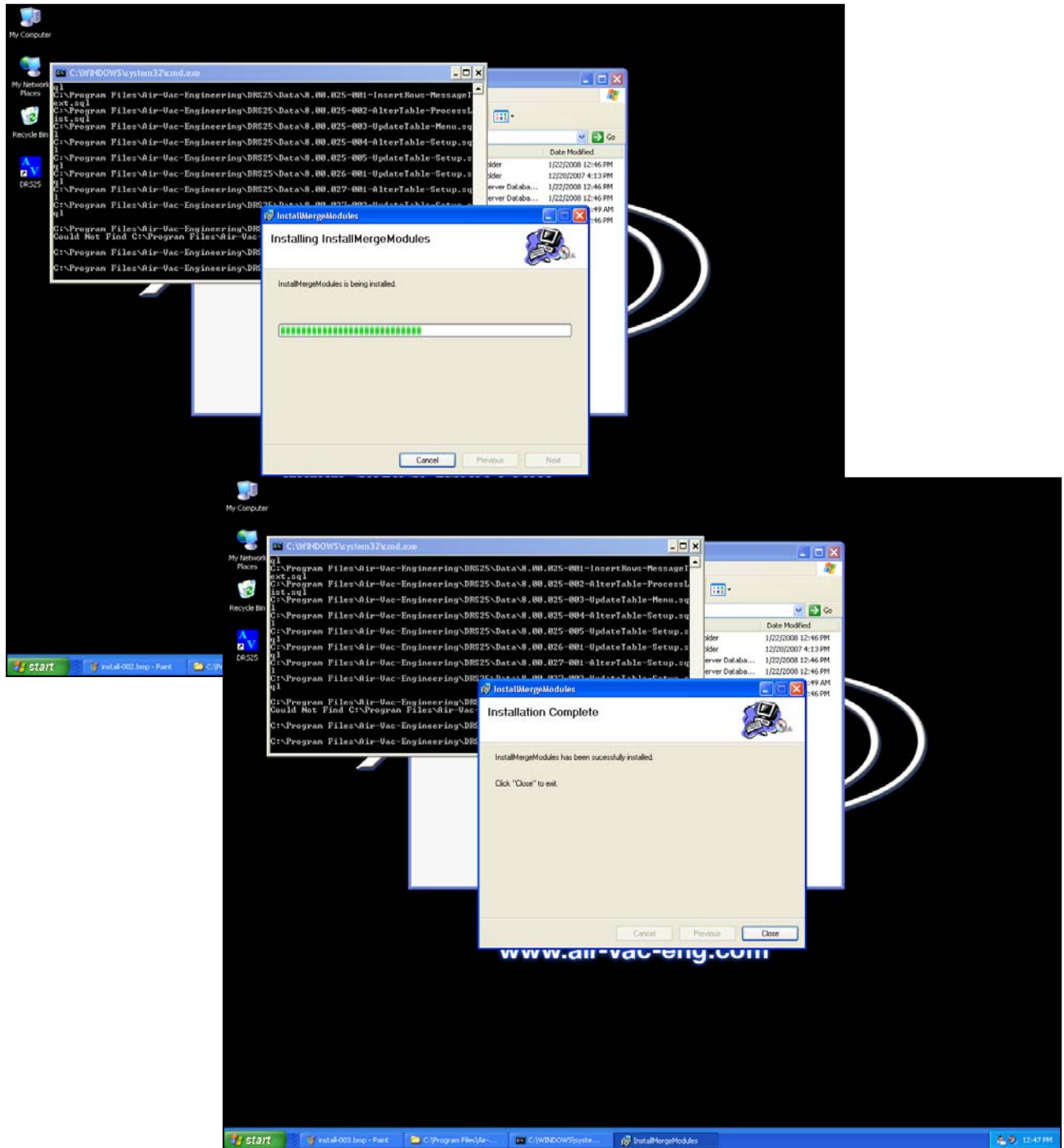
This setup program will install the necessary merge files to offer the above defined voice templates.

Step 1:



During this installation procedure, accept all default settings and click on the *Next* button for each window.

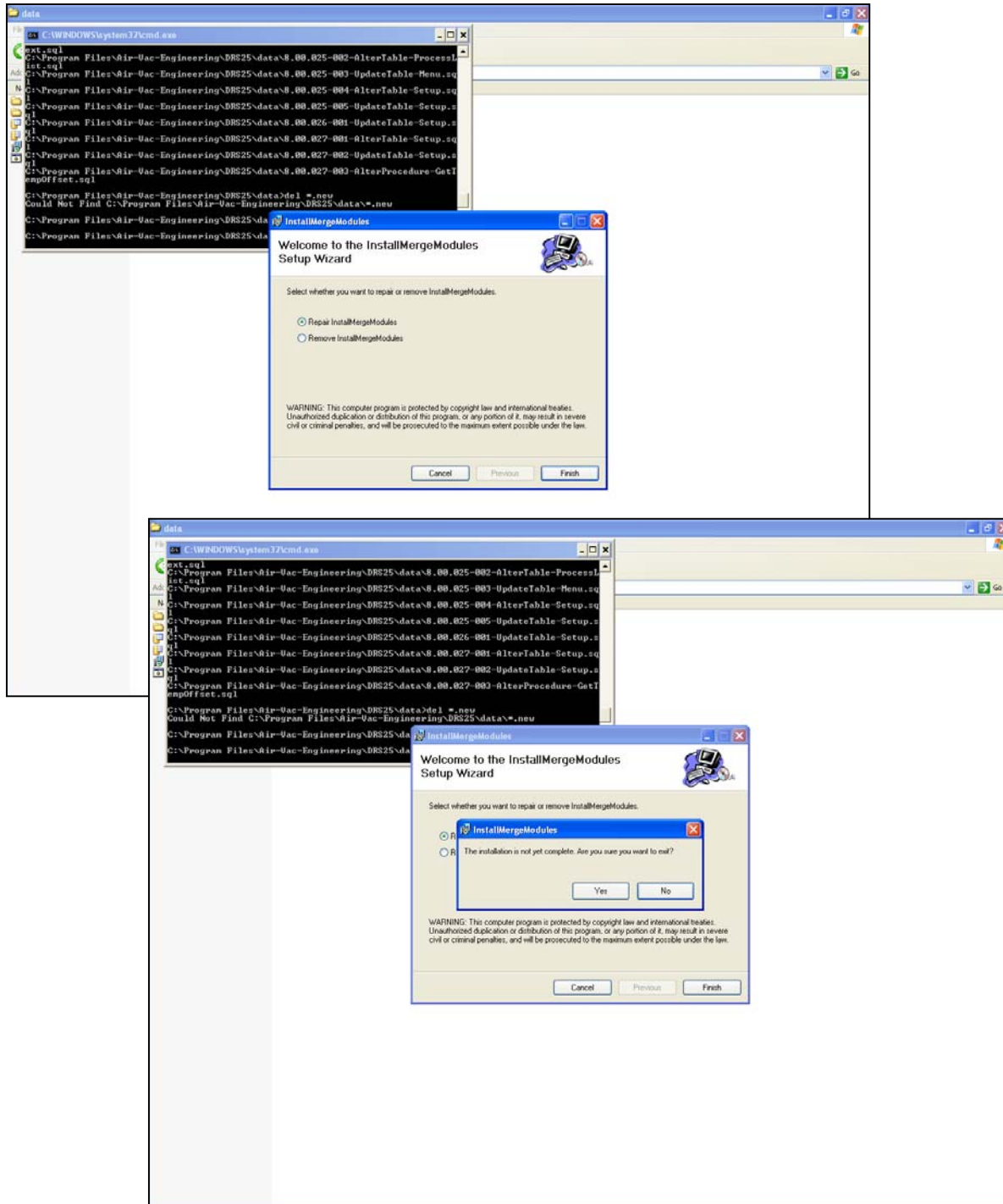
Step 2:

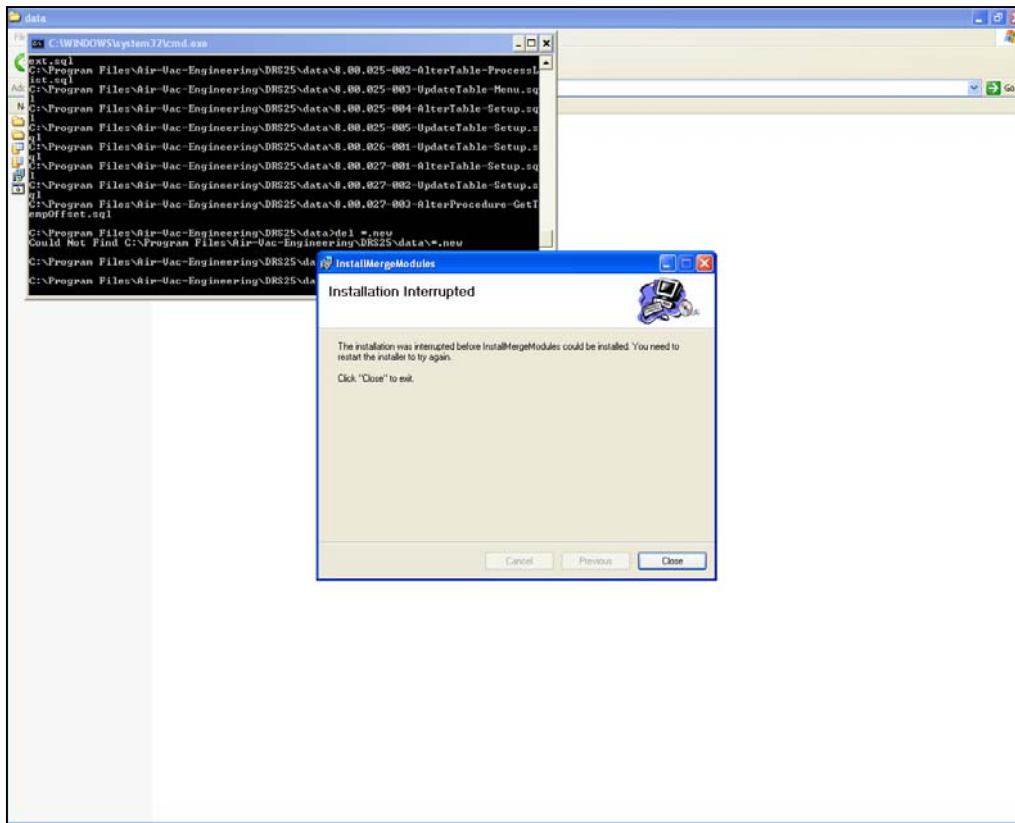


Complete the installation procedure by clicking on the *Close* button

**Note**

If the **Microsoft Voice Templates (Merge Modules)** have previously been installed, the following procedure should be followed to skip the installation. Reinstalling the Merge Modules does cause any problems.

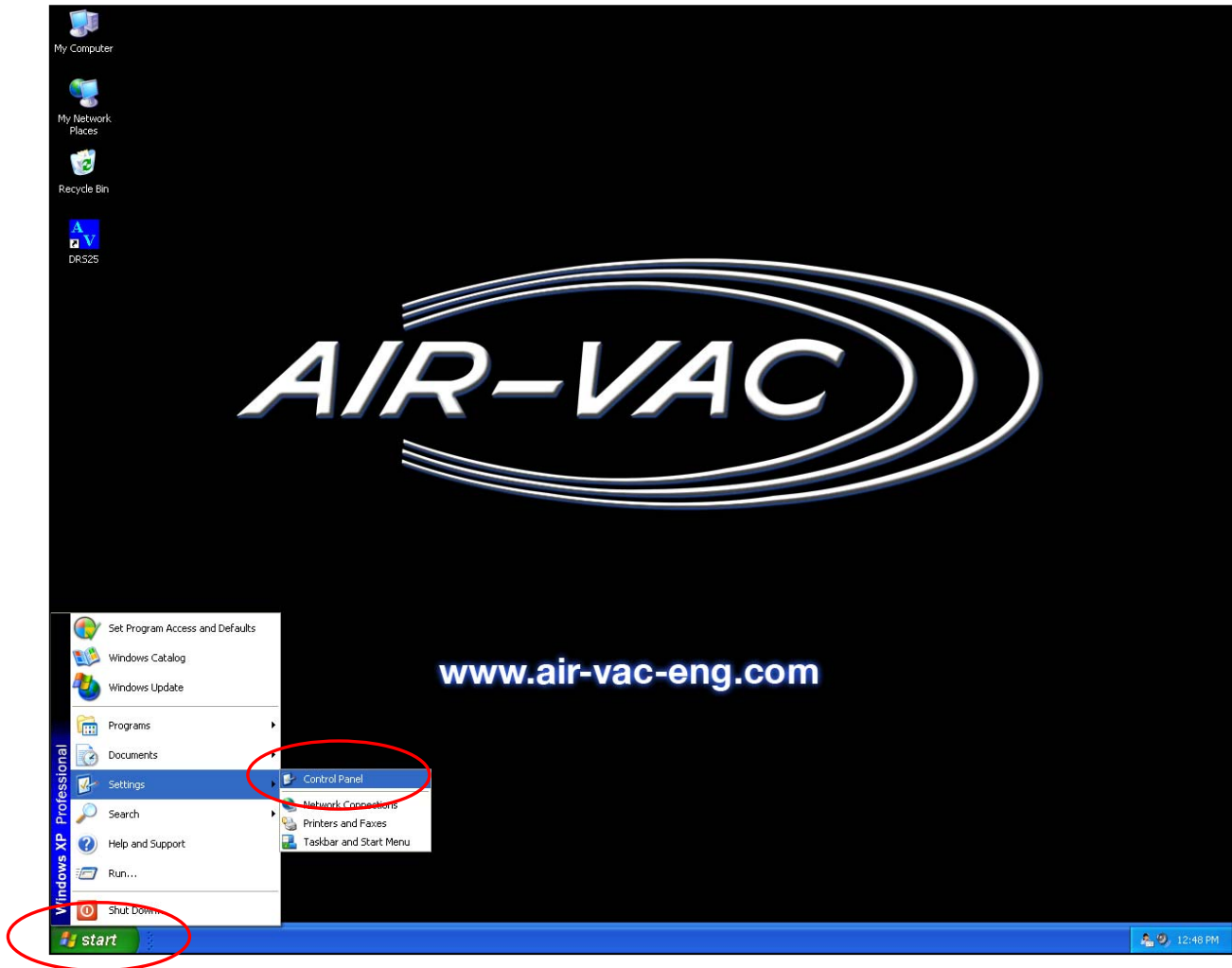




This completes the steps associated with skipping the **Microsoft Voice Templates** installation procedure.

### Step 3:

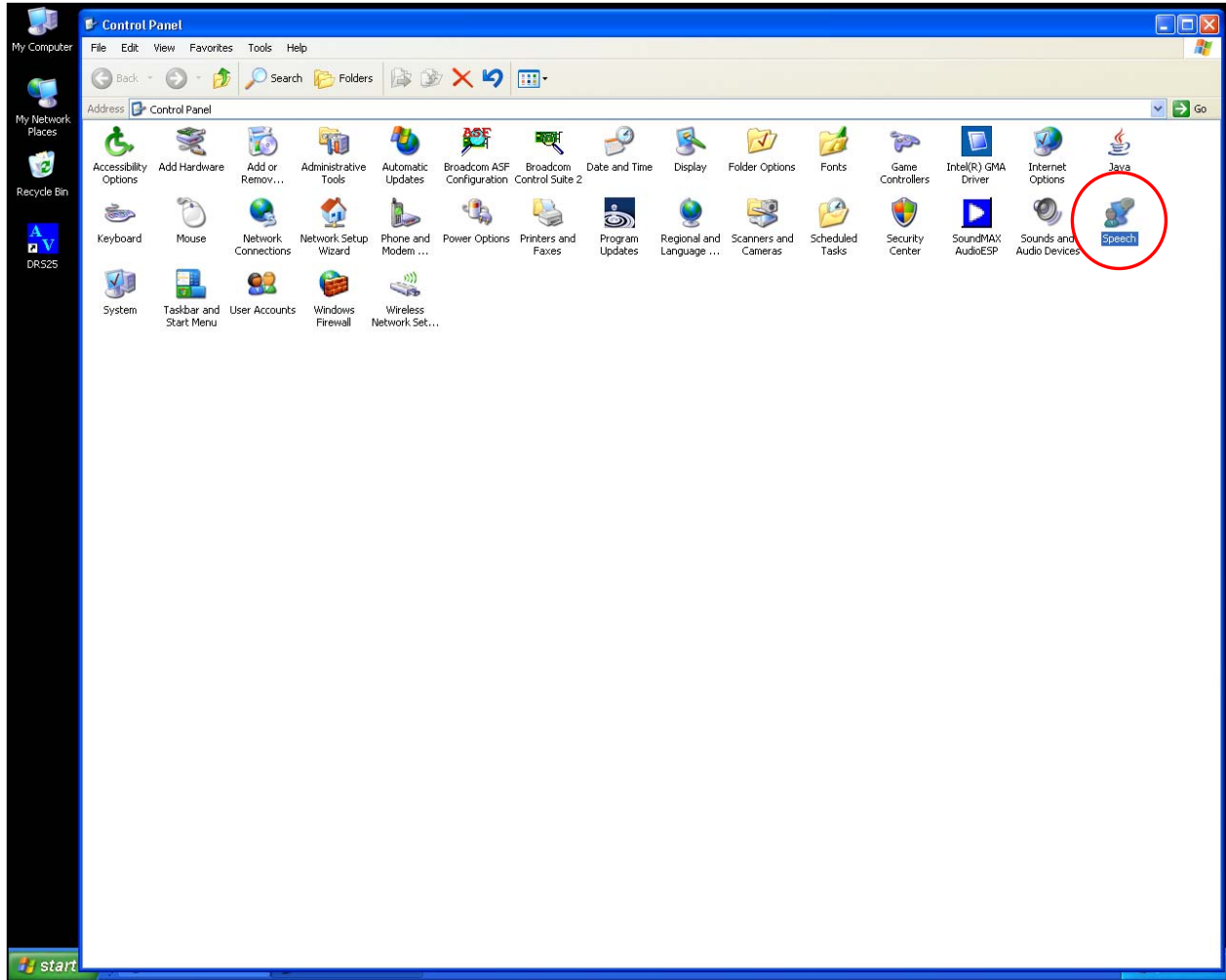
Selecting a default voice requires the use of the Windows *Control Panel* utility. Click on the *Start / Settings / Control Panel* menu to enter this utility.





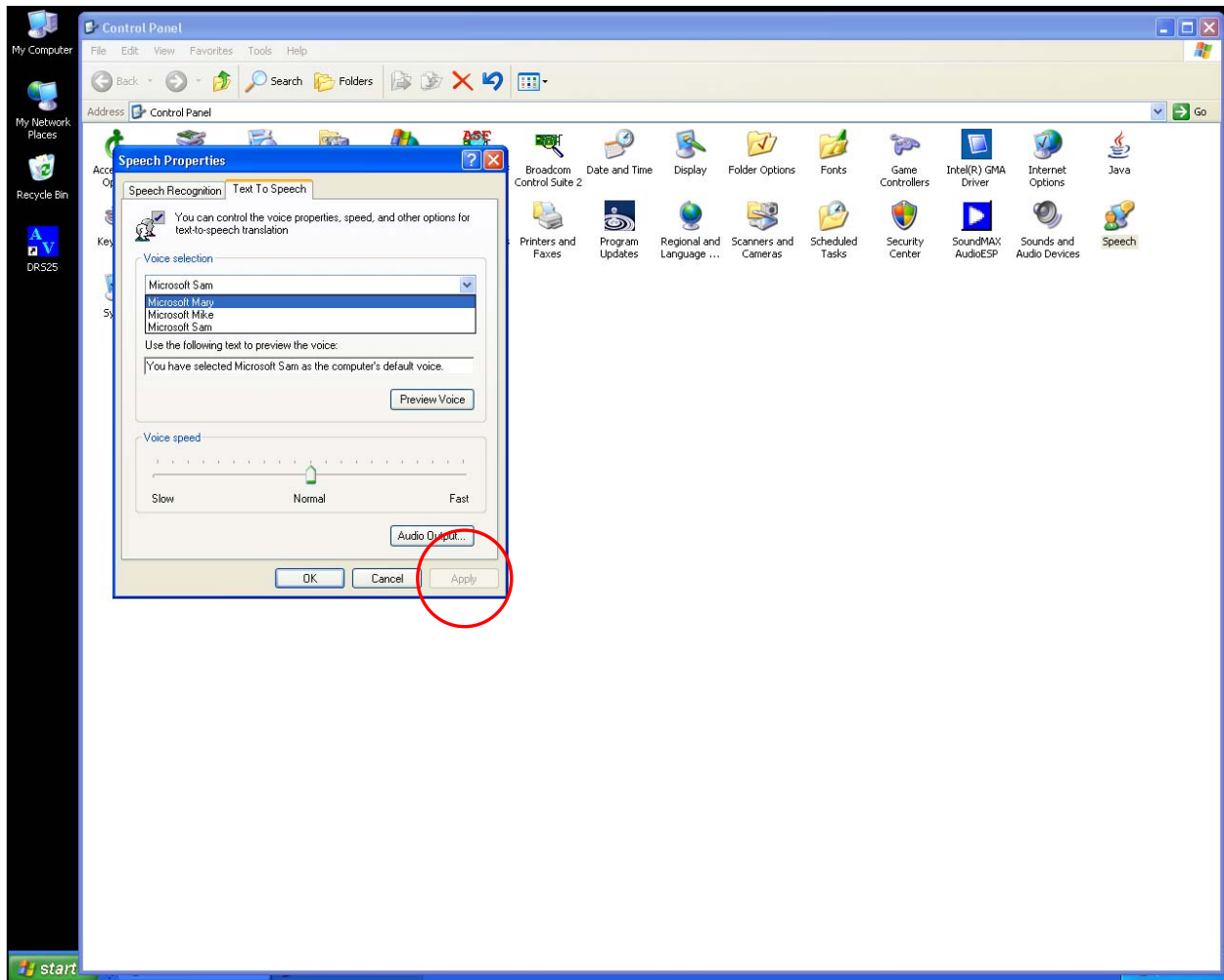
Step 4:

Double-click on the *Speech* option to access the default *Text-To-Speech* options.



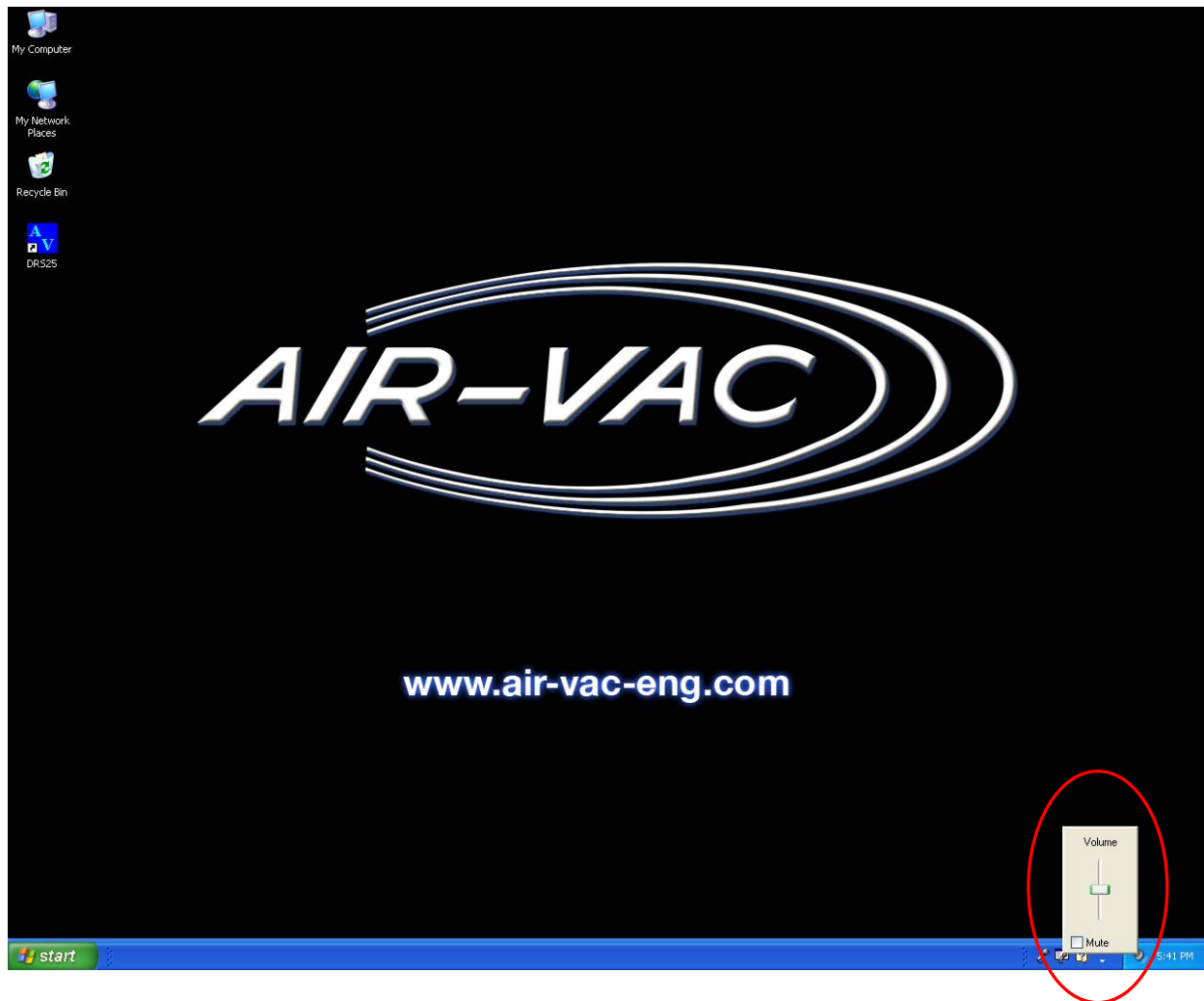
Step 5:

Click on the drop down menu to make a voice selection. Be sure to click on the *Apply* button to accept any changes.



Step 6:

Verify that the *Mute* setting is disabled.



This completes the installation procedure.