

# DRS25



Factory Reconditioned - Full 1 Year Warranty

Lead-Free Rework &  
Repair of BGAs, CSPs,  
Flip Chip, SMT & 0201s



**Superior Automation • Excellent Thermal Performance • Proprietary Site Cleaning  
Precision Vision Alignment • Custom Nozzle Design • Long Term Service & Support**

**Effective Lead-Free Rework** - New large, powerful, radiant IR panel preheater provides the capability to preheat any assembly to higher temperatures required for lead-free rework.

- High thermal uniformity based on proprietary design.
- No air consumption or noise.

**Rapid Assembly Cooldown** - New Board Cooling System provides rapid cooldown of the component and assembly.

- Ability to control time over reflow.
- Promotes operator safety. Comfortable board handling and reduced machine preheater surface temperatures.

**Greater Stability/Flexibility** - New Enhanced Board Carrier provides increased stability and greater flexibility for various assemblies.

- Expanded board holding capability.
- Insulated knobs for increased operator safety.

**NEW Control System** - Adds the latest USB interface technology for a very stable communication platform.

**Auto Profiling Capability** - New Profile Tutor Software provides fast and easy, first run, automatic thermal profile of any device with on-the-fly capability. Simply set the target temperatures and go. After thermal profile is complete, the entire rework process (removal, site cleaning and replacement) is built automatically and ready to run immediately.

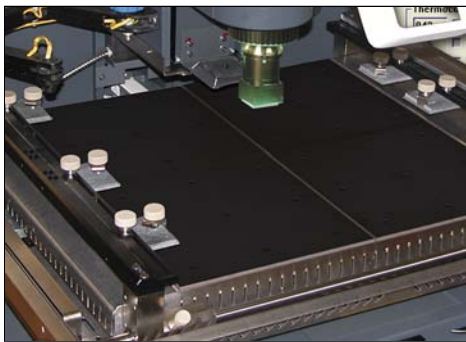
**Automated Micro Site Cleaning**

- Standard & Micro Tip Site Clean Assembly with a high temp, non-abrasive, composite vacuum micro tip with an inside diameter as small as 0.063".
- Composite vacuum tip with automatic height adjustment, compensates for variable residual solder volume.
- Eliminates potential damage to pads or solder mask caused by contact-based methods.

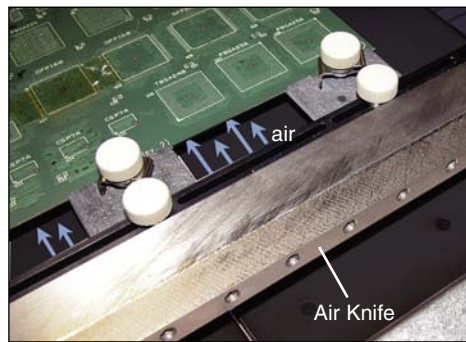
**Custom Nozzle Design**

Air-Vac has made thousands of nozzles for virtually any type of surface mounted device including an expanding line of BGA and connector nozzles.

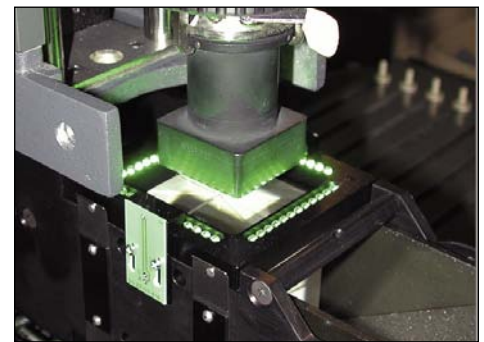
# Lead-Free Rework & Repair of BGAs, CSPs, Flip Chip, SMT & 0201s



POWERFUL IR PANEL PREHEATER



BOARD COOLING SYSTEM



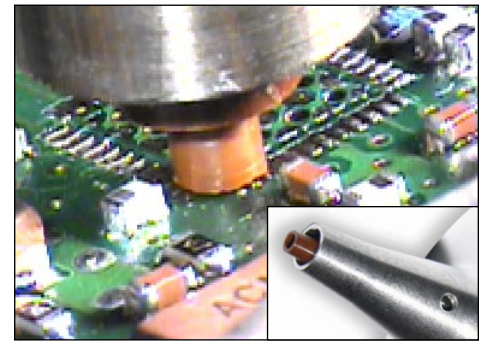
COLORLED LED LIGHTING



INTELLIGENT SOFTWARE CONTROL



COMPLETE WORKSTATION & ACCESSORIES



STANDARD & MICRO SITE CLEANING

## All DRS25 Standard Rework Systems Include:

- High Efficiency, 16"x16" Preheater (5000 watts)
- Programmable Board Cooling System
- Thermal Tutor Software with Auto Profile Build
- Leica Stereo Microscope with Zoom Lens
- Green/White LED Vision with Independent Adjustment
- Closed-Loop Air/Gas Adjustment
- Real-Time Force Placement
- Nozzle "Cool-Air" Injection
- Desktop Computer (Windows XP) and Monitor
- 8 Programmable Thermocouple Channels
- Maintenance & Verification Kit
- Board Size of 18" x 24" (see below for other board sizes)
- Topside Clearance of 1.0" (see below for other clearances)

## Board Carrier & Preheater Configurations

• Model	DRS25	DRS25XL	DRS25T	DRS25XLT
• Description	Standard machine	Extra large boards	Extra topside clearance	XL boards, extra topside clearance
• Preheater				
- size	16" x 16"	24" x 16"	16" x 16"	24" x 16"
- zones	2	3	2	3
- watts	5000	7500	5000	7500
• Board Size	18" x 24"	24" x 24"	18" x 24"	24" x 24"
• Clearance				
- topside	1.0"	1.0"	2.3"	2.3"
- bottom	1.0"	1.0"	.97"	.97"

## Recommended Options

- **Pivoting IR Sensor w/Laser Pointer** (1012.02.017)  
Accurate measurement of board temperature.
- **Spot IR Sensor w/Laser Pointer** (0025.07.041)  
Precision temperature measurement of dense assembled boards.
- **Site Cleaning System** (0025.04.010) - Includes standard and micro nozzles for complete removal of solder.
- **Universal Insertion Tool** (AU4LGA45SQ) - Mechanically self-centers any square device for accurate pick up.
- **Recommended Spare Parts** (0029.00.040)

## Workstation and Options

- **Ergonomic Workstation with CPU Holder** (1003.05.010)
- **Monitor Stand Option for Workstation** (1003.05.005)
- **Nozzle Stand Option for Workstation** (1003.05.006)
- **Locking Drawer Option for Workstation** (1003.05.007)

## Other Options

- **Direct View Camera w/20" Video Monitor** (0025.03.010)  
Provides high magnification site viewing.
- **Video Inspection System w/15" Monitor** (1025.00.010)  
Hand held video inspection for printed circuit boards.
- **Paste-On-Device Stencil Adapter** (0024.24.111)  
Applies solder paste directly to the component spheres.
- **Thermocouple Organizer** (0024.90.047)
- **Fume Extraction Manifold & Hose Assembly** (1020.01.040)
- **Lead Free Rework Training Kit** (1023.02.010)
- **4 Additional Thermocouple Ports** (300.00.504)