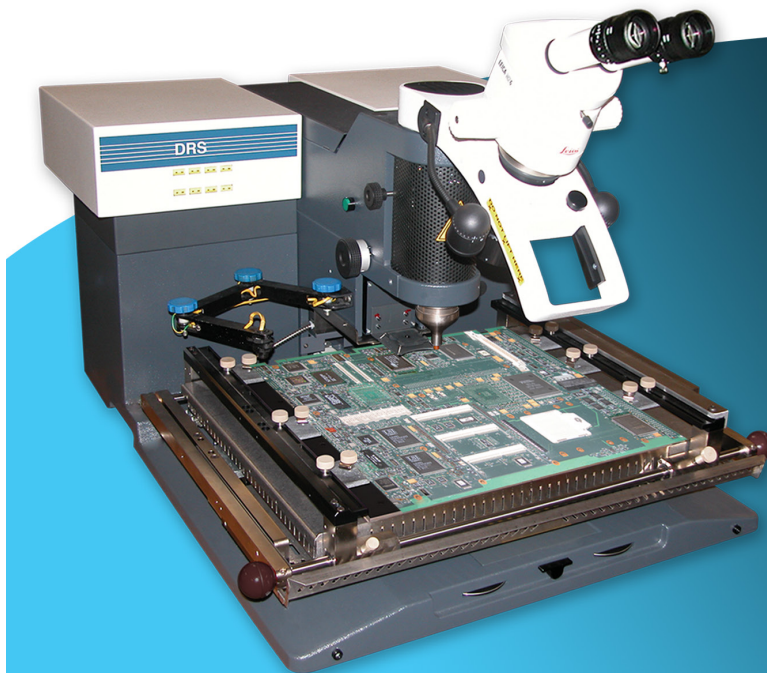


High Performance, Semi-Automated SMT Rework

FACTORY RECONDITIONED • RELIABLE & SIMPLE OPERATION



- Precision Vision Alignment
- Proprietary Site Cleaning
- Repeatable Thermal Performance
- Robust 24/7 Platform
- Closed-Loop Automation
- Custom Nozzle Design
- Auto Profiling Software

Precision Vision Alignment

- Leica Inspection-Quality Stereo Microscope for clear, fast, precise distinction of pads and leads.

Non-Contact Site Cleaning

- Vacuum sensor automatically adjusts tip height, compensating for variable residue solder volume.
- Non-abrasive vacuum tip removes residual solder.

Thermal Performance

- Mass Flow Controller: Regulates precise heat flow combined with 1000 watt high efficiency (patented) heater provide repeatable, closed-loop results.
- Powerful Radiant IR Panel PreHeater: Delivers extreme uniform bottom side heating.
- Board Cooling System: Cools down assembly after rework resulting in safe operator handling of pcb and bringing system back to initial thermal conditions.

Robust Platform for Long Term Performance

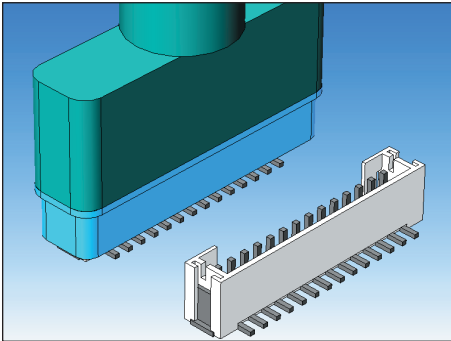
- Cast frame supports board carrier movement and vision system.
- Precision vertical mechanism includes die-set bearings and high-grade shaft to ensure long term accuracy.

Closed-Loop Automation

- Force Placement Control: Load cell indicates real-time and target setting (50-2000 grams).
- Motorized Z and Vision Axis: component place, pick, flux/solder dipping and drop off.
- Vacuum Sensor Control: Activates automatic component removal (no solder squeeze out).
- Temperature-Based Preheat: Regardless of board conditions, the non-contact IR sensor triggers and automatically advances the program when preheat setting is reached.

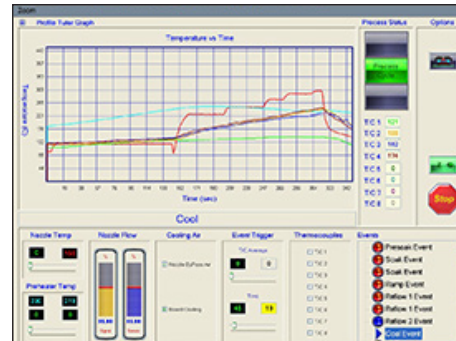
Custom Nozzle Design

- Air-Vac has made thousands of nozzles for virtually any type of surface mounted device.
- Nozzles made for special attention to thermal control, joint temp uniformity, limitation of heat to device or sensitive areas and production concerns.



Auto Profiling Capability

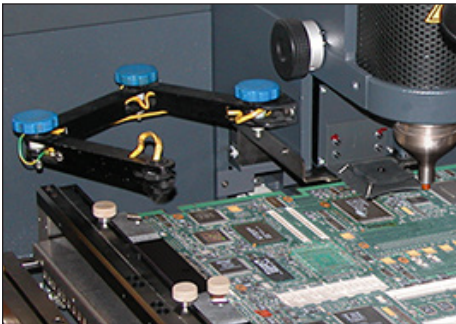
- Profile Tutor Software: fast and easy, first run, automatic thermal profile of any device with on-the-fly capability. Simply set the component size and go.
- The entire rework process (removal, site cleaning and replacement) is built automatically and ready to run.



Recommended Options:

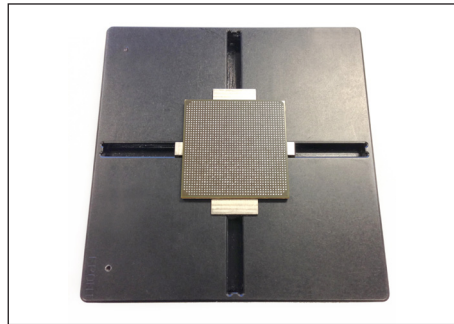
Pivoting IR Sensor w/Laser Pointer (1012.02.017)

Measures board temp to trigger end of board preheat and monitors PCB temperature throughout the process.



Universal Insertion Tool (AU6LGA47R)

Mechanically self centers device for accurate pick up. Component range 6-47mm.



Site Cleaning System (0029.03.012)

Includes standard & micro nozzles for complete removal of solder.



All DRS25 Standard Rework Systems include:

- High Efficiency, 16" x 16" Preheater (5000 watts), 2-Zone
- Programmable Board Cooling System
- Thermal Tutor Software with Auto Profile Build
- Leica Stereo Microscope with Zoom Lens
- Green/White LED Vision with Independent Adjustment
- Closed-Loop Air/Gas Adjustment
- Real-Time Force Placement
- Nozzle "Cool-Air" Injection
- Desktop Computer (Windows 10) and Monitor
- 8 Programmable Thermocouple Channels
- Maintenance and Verification Kit

Other Options:

- Recommended Spare Parts Kit (0025.00.040)
- Direct View Camera w/20" Video Monitor (0025.03.016)
Provides high magnification of site viewing.
- Paste-On-Device Stencil Adapter (0024.24.111)
Applies solder paste directly to the component spheres.

Workstation and Options:

- Ergonomic Workstation with CPU Holder (1003.05.10)
- Monitor Stand Option for Workstation (1003.05.005)
- Nozzle Stand Option for Workstation (1003.05.006)
- Locking Drawer Option for Workstation (1003.05.007)



Air-Vac Engineering Company, Inc.
Seymour, CT • 203.888.9900 | Carlsbad, CA • 760.438.9363
air-vac-eng.com

Print Date 11-23