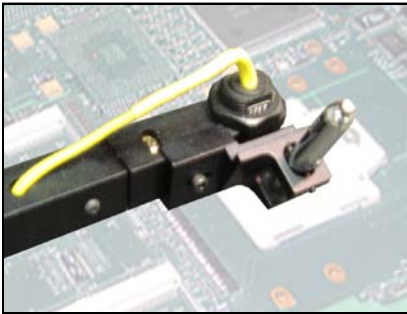


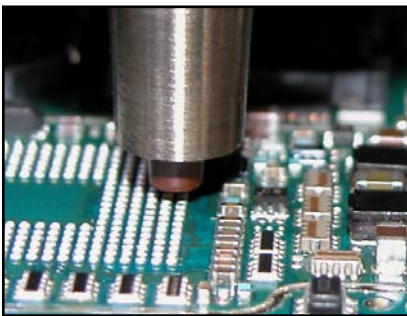
DRS25

Options



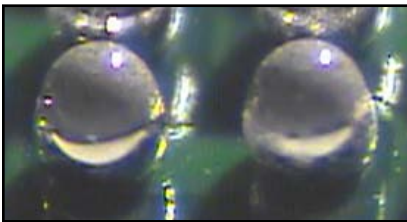
Pivoting IR Probe with Pointer #1012.02.017

- Provides process repeatability by insuring that the board is at the exact same target temperature each time before localized reflow begins.
- Operator is instructed to position the sensor at the beginning of the process.
- The laser point provides a visual reference to the center of the IR sensor verifying position over the substrate and at the same location as when profiled.
- Pivot function allows positioning on small boards without interference of the nozzle heating throughout the rework processes.
- The non-contact temperature sensor monitors topside board temperature and automatically triggers the reflow process once the target temperature is reached.



Site Cleaning System #0025.04.010

- Includes Standard and Micro nozzles.
- High temperature composite vacuum tip eliminates metal-to-metal contact.
- Vacuum sensor automatically and continuously adjusts tip height, providing non-contact site cleaning.
- Various size heating noses and tips provide the ability to clean virtually any site.
- Ready-to-use site cleaning master programs for fully automated solder removal.



Dipping Kit for new dippable solder paste or tacky flux #FASET1

- Superior to applying paste via component or board stencils
- Easier process and less operator involvement than stencils (consistent results)
- No component or board/pad coplanarity preparation Issues
- No adjacent interference issues
- Excellent for Extremely Fine Pitch, Sphere or Leaded Size Components
- One Set of Dipping Pedestals Replaces Dozens of Custom Component Stencils



Ergonomic Workstation #1003.05.010 and Options

- Provides a self contained work cell environment for the machine and operator.
- 60"W x 36"D sturdy construction with anti-static laminate surface. Includes CPU Holder.

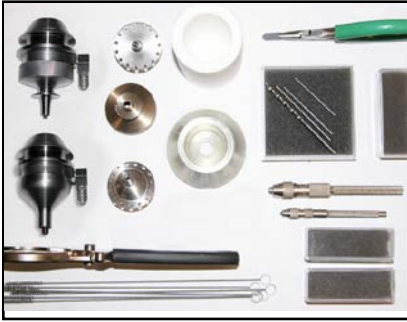
Options

- 1003.05.05 Monitor Stand
- 1003.05.06 Nozzle Stand
- 1003.05.07 Locking Drawer



Direct View Camera w/20" Video Monitor #0025.03.010

- Provides high magnification site viewing including the ability to verify when component reflow has occurred.
- Operator positions the camera on the site. Focus, zoom, and lighting adjustments are made to optimize clarity. The image is displayed on a flat screen monitor.
- A valuable process development aid especially for difficult to see tiny solder joints.
- Recommended for use in conjunction with the automatic site cleaning system to verify cleaning on dense assemblies.
- Recommended for the dispensing option to provide dispense inspection capability.



Standard & Micro Site Cleaning Nozzle Kits

- Single Standard Kit includes nozzle, one nose length and two tip sizes (.188 x .125) and (.125 x .089). #1015.11.013
- Single Micro Kit includes nozzle, two noses (different lengths) and three tip sizes (.09 x .060), (.074 x .042) and (.05 x .025). #1015.11.016
- Combination Micro & Standard Kit includes both of the above. #1015.11.017

Universal Insertion Tool #AU6LGA47R

Mechanically self-centers any square or rectangular device for accurate pick up. Used in conjunction with vision system component tray. Component Range: 6-47mm rectangular devices

Paste-On-Device Mini Micro Stencil Adapter #0024.24.111

- Component specific stencil applies solder paste directly to the component spheres.
- Pasted device in stencil is placed in stencil adapter, which is used in conjunction with the vision system component tray to pick up the pasted device.
- Air-Vac does not supply the component-specific stencils. Recommended supplier is Mini Micro Stencil 760-591-3804.

Thermocouple Organizer #0024.90.047

- Used with profiling boards. Holds and aligns 4 thermocouples for machine thermocouple ports.

Fume Extraction Manifold & Hose Assembly #1020.01.040

- Removes flux vapors from the work environment for operator health and safety.
- Includes fume extraction manifold and hose assembly.
- Requires connection to a central exhaust or self-contained filtering system.

Lead-Free Rework Training Kit #1023.02.010

Allows process development and software knowledge to be practiced prior to reworking actual production assemblies.

Flux Dip Pedestals

- Stainless steel fluxing pedestals with precision-machined depth provides controlled application of tacky flux directly to the solder spheres on the device.
- Used in conjunction with the vision system component tray.
- Various sizes and depths available. Recommended depth is 50% of ball height.

Four Additional Thermocouple Ports #300.00.504

