

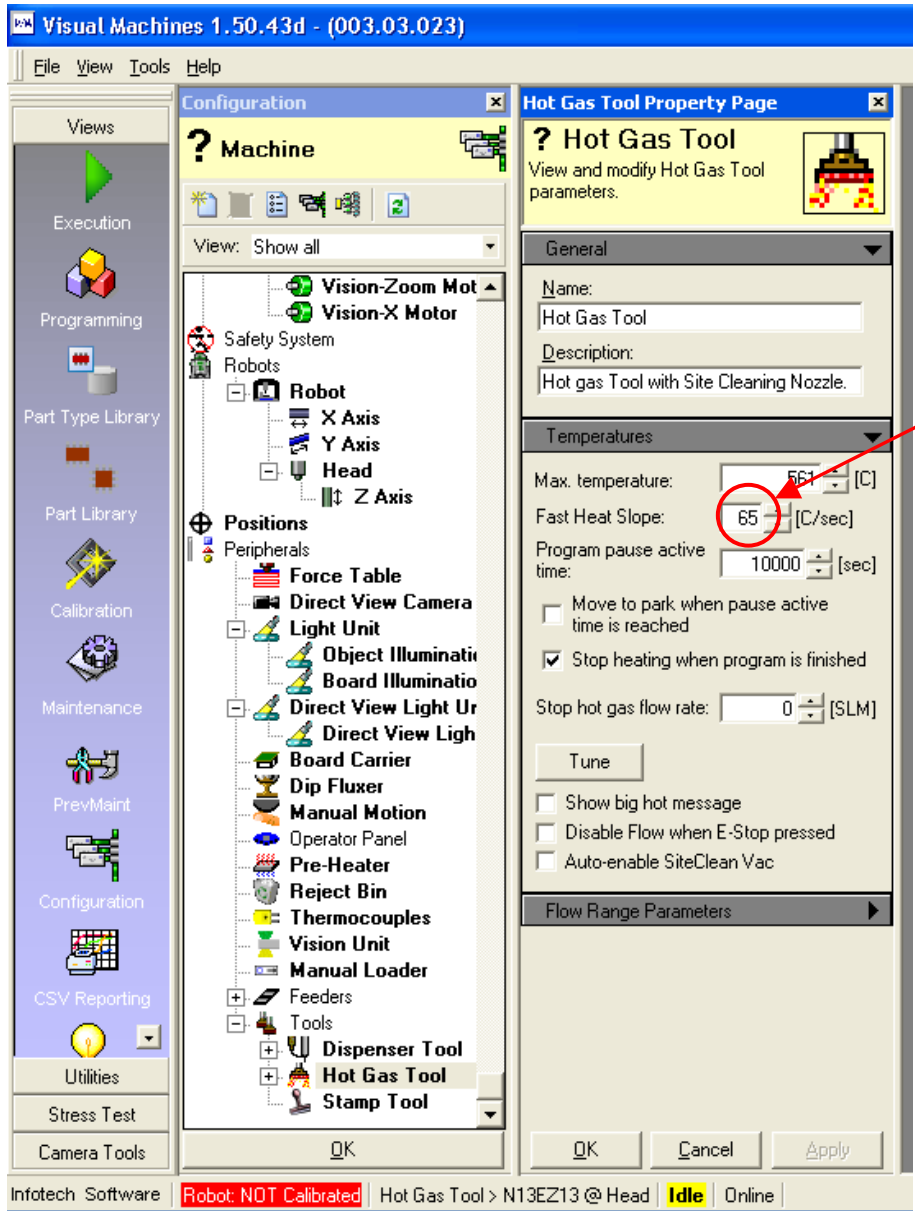


TROUBLESHOOTING GUIDE

Release Notes

Product Line: Onyx 29
Category: Nozzle Heater

PROBLEM	SOLUTION
<ul style="list-style-type: none"> No heat output from nozzle heater. 	<ul style="list-style-type: none"> Go to machine configuration screen. Select “Hot Gas Tool” Check “Fast Heat Slope”, should be defaulted at 65c/sec. If there is no value entered here the heater will not heat. If there is still no heat proceed to the next steps.



Check Nozzle Heater

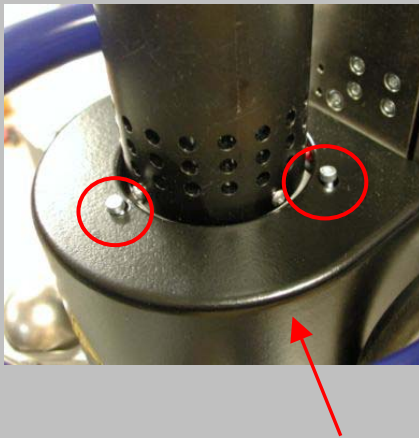


- **Be certain machine is off and the power to the machine is disconnected.**
- To access the nozzle heater, loosen the two set screws that hold the retaining bracket and remove it..

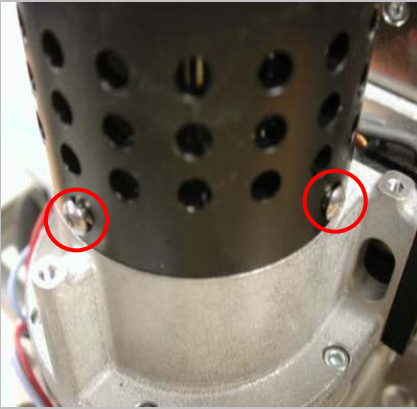


- Slide cowl up out of the way.
- Locate the ceramic terminal block.
- To determine whether the heater is good or not, check with a multimeter:
- Check the blue and brown wire Terminal. 26.0 Ω +/- 5.0.
- If heater ohms out okay check both heater fuses for continuity at the rear of the machine F7.
- If heater is bad replace it. With part number **0100.01.120**

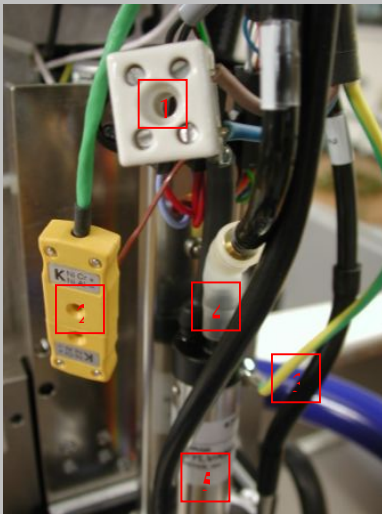
Replacing Heater



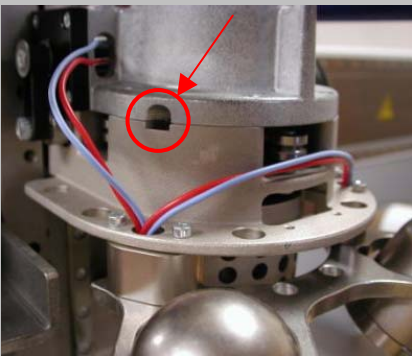
- Remove the three screws holding the cover.
- Slide cover out of the way.



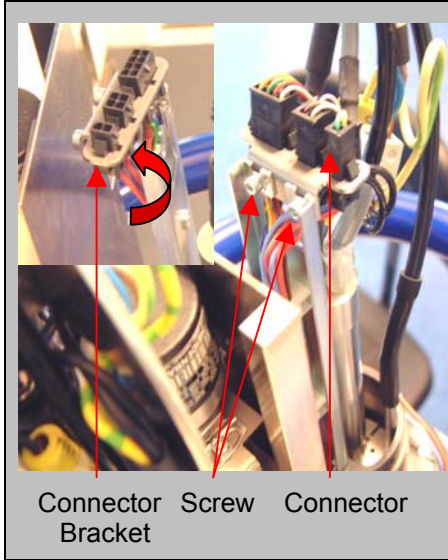
- Remove the three screws holding the heat shield.
- Slide Shield out of the way exposing the heater.



1. Disconnect heater wires from the ceramic terminal block.
2. Unplug the yellow thermocouple plug. (re-use the plug for the new heater.)
3. Remove the green/yellow ground wire.
4. Disconnect the air tube.
5. Heater



- Loosen the set screw that locks the heater in place and remove the heater.



- Remove the two screws that hold the connector bracket and move it to the side out of the way so the heater can be removed.
- To install the new heater reverse the steps. Be certain when installing the new heater, that the heater is fully seated before tightening the set screw referred to here.
- To calibrate the new heater, refer to the Verification/Calibration instructions.