

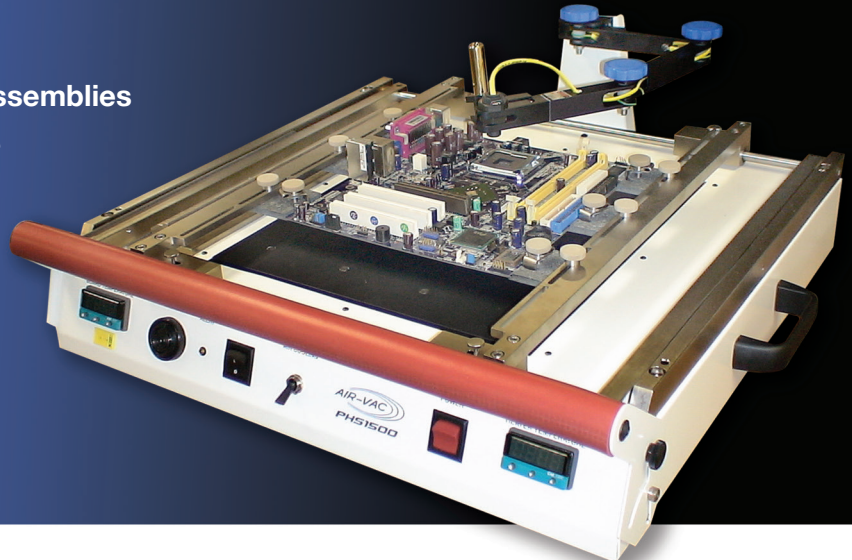
PHS1500/4000

Stand Alone Preheaters



KEY FEATURES

- Uniform Preheat Surface
- Perfect for Medium to High Mass Assemblies
- Minimizes the Process Temperature
- Minimizes Risk of Thermal Damage
- Speeds Up Repair

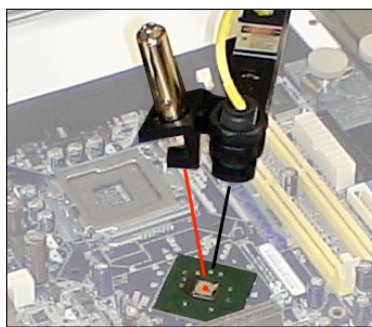


Enhance Your Rework Procedures

Air-Vac PHS Infrared Preheaters are the ideal accessories for Circuit Board Repair and Assembly, providing near perfect thermal uniformity.

PREHEAT BENEFITS

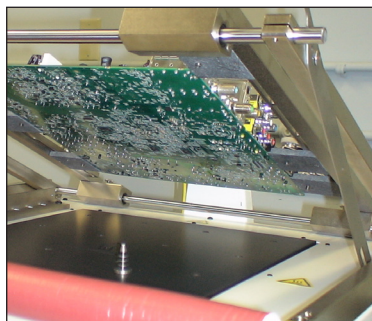
- **Use on medium to high-mass assemblies** that can heat sink significant amounts of energy from a hand tool or solder pot rework.
- **Minimizes the process temperature.** Ideal for lead-free applications where the high melt alloy requires a high process temperature.
- **Minimizes risk of thermal damage.** Ideal for fine pitch assemblies where pad damage is most prevalent.
- **Minimizes time the process** (localized) heat is applied. **Speeds up repair.**
- Activates flux. **Ensures volatile and water removal.**
- For reflow rework, **reduces thermal gradient,** therefore **minimizing localized pcb warpage.**
- Establishes a **uniform starting process** condition for **enhanced process control.**



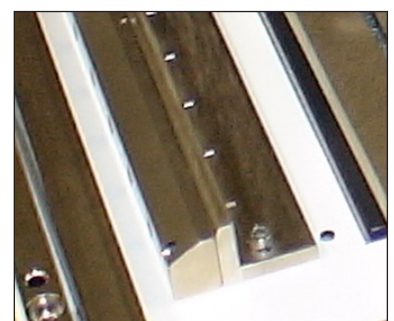
Temperature Sensor/Laser Pointer



Adjustable Arm Rest



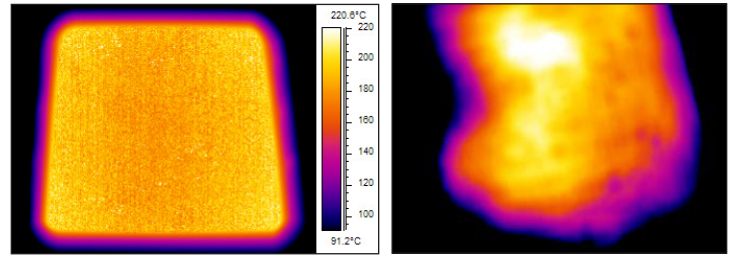
Tilt-Up Carrier



Air Knife for Board Cooling

Enhance Your Rework Procedures

The **PHS Stand-Alone Preheater** is the *ideal accessory for circuit board repair and assembly* and will easily integrate into any existing workstation. The infrared preheater provides ample, uniform heat to accommodate both tin-lead and lead-free applications, while an audible alarm indicates when the desired temperature has been reached. The compact design features a sturdy board carrier and cushioned armrest to provide a safe and comfortable platform for operators.



Near Perfect High Thermal Uniformity (left) using the Air-Vac PHS Preheater vs. the competitions uneven uniformity (right).

A Great Combo for Effective Lead-Free and/or Thermally Challenging Rework/Selective Soldering!



PCBRM15

Controlled mini-wave with component specific shape and flow heats all leads simultaneously for component removal and replacement. Preset controls for temperature, time, and pump speed. Separate PCBRM15 literature available.



PHS Preheater

Infrared panel reduces the process temperature and time.

PHS Preheater Models & Specifications

Standard Features/Benefits

- Uniform Preheat Surface: $\pm 5^{\circ}\text{C}$ (single panel), $\pm 10^{\circ}\text{C}$ (two panels)
- Bottom Board Supports for Heavier Assemblies
- Adjustable Arm Rest for Safety and Comfort
- Audible Temperature Setpoint Alarm
- Tilt-Up Carrier (1500/4000)
- Board Holder Segments (1500/4000)
- PCB Temperature Safety Feature

Options

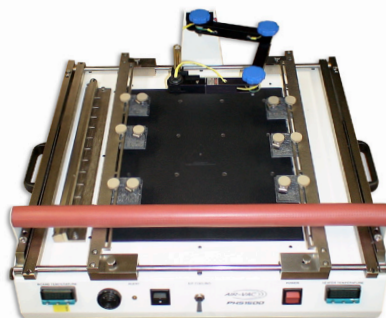
- Temperature Sensor with Laser Pointer
- Air Knife for Board Cooling



PHS1500NC

Basic Preheater "hot plate" (no board carrier), shown with optional board cooling system.

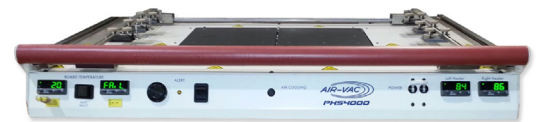
- **Dimensions:** 22"W x 21"D x 6"H
- **Max Board Size:** 13 3/8"W x 20"D
- **Temperature Range:** 50-260°C
- **Electrical:** 1500 watts, 110 volts
- **Preheater Zones:** 1
- **T/C Channels & Controllers:** 1



PHS1500

Standard Preheater includes tilt-up board carrier, shown with optional Temp Sensor and board cooling system.

- **Dimensions:** 22"W x 21"D x 6"H
- **Max Board Size:** 13 3/8"W x 20"D
- **Temperature Range:** 50-260°C
- **Electrical:** 1500 watts, 110 volts
- **Preheater Zones:** 1
- **T/C Channels & Controllers:** 1



PHS4000

Large 2-Zone Preheater includes tilt-up board carrier, shown with optional board cooling system.

- **Dimensions:** 37"W x 23"D x 6"H
- **Max Board Size:** 22"W x 20"D
- **Temperature Range:** 50-325°C
- **Electrical:** 4000 watts, 208 volts
- **Preheater Zones:** 2
- **T/C Channels & Controllers:** 2



Headquarters - 30 Progress Avenue • Seymour, CT 06483 • 203.888.9900 • air-vac-eng.com
West Coast Office - 2131 Las Palmas Drive • Suite D • Carlsbad, CA 92011 • 760.438.9363